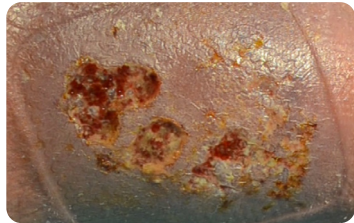


Biatain® Range now on your Formulary

Superficial



✓ Biatain® Silicone

Biatain Silicone absorbs vertically and conforms to the wound bed to reduce exudate pooling and reduce the risk of maceration to the wound edge and periwound skin.

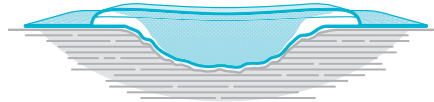


0-2cm in depth*1-3



✓ Biatain® Silicone

Biatain Silicone absorbs vertically and conforms to the wound bed to reduce exudate pooling and reduce the risk of maceration to the wound edge and periwound skin.

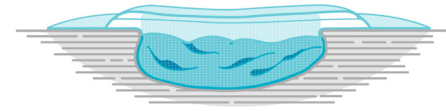


>2cm in depth

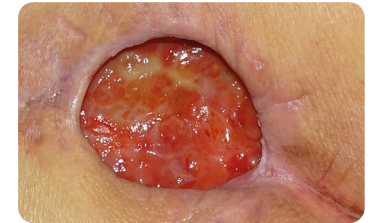


✓ Biatain® Silicone + Filler

Fill the wound loosely to protect the wound bed. Biatain Silicone can be used as the secondary dressing. Biatain Silicone absorbs vertically and protects the wound edge and periwound skin.

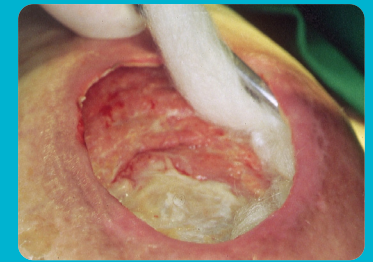
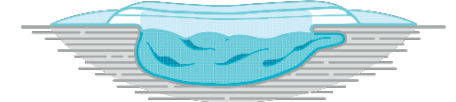


Undermining/tunneling



✓ Biatain® Silicone + Filler

Fill the wound loosely to protect the wound bed and cover undermined areas. Biatain Silicone can be used as the secondary dressing. Biatain Silicone absorbs vertically and protects the wound edge and periwound skin.



For further information please contact your local Coloplast Representative, Sohail Ismail: ☎ 07852 941866 ✉ gbsil@coloplast.com

*Conformability may vary across product design

This information is for general guidance only and should not replace clinical judgement. If you are unsure, seek TVN advice

All images are copyright of Coloplast. The Coloplast logo is a registered trademark of Coloplast A/S. © 2021 All rights reserved Coloplast A/S PM-16084



3DFit®
Technology



Coloplast

Transforming Care. Transforming Lives.



**Absorbs
vertically**



**Conforms to
wound bed**



**Retains exudate &
99.98% of bacteria*⁴**

Biatain® Silicone

Size (cm)	Quantity	Code	NHS	PIP
7.5x7.5	10	3434	ELA425	353-3817
10x10	10	3435	ELA451	356-9811
12.5x12.5	10	3436	ELA426	353-3825
15x15	5	3437	ELA427	353-3833
17.5x17.5	5	3438	ELA428	353-3841
14x19.5 multishape	5	33408	ELA1015	404-6066
18x18 heel	5	33406	ELA1013	404-6058
15x19 sacral	5	33404	ELA1014	404-6033
25x25 sacral	5	33405	ELA1012	404-6041
10x20	5	33400	ELA1011	404-6074
10x30	5	33401	ELA1016	404-6082

Biatain® Non-Adhesive

Size (cm)	Quantity	Code	NHS	PIP
5x7	10	6105	ELA414	339-6355
10x10	10	3410	ELA039	265-3228
10x20	5	3412	ELA260	315-7674
15x15	5	3413	ELA041	265-3236
20x20	5	3416	ELA047	276-2456

*Applicable to Biatain Silicone only

References: 1. Data on file. VV-0201548. 2. Braunwart H et al, Conformability of a foam dressing - clinical experience based on 104 cases. Wound UK 2017. 3. Braunwart H et al, Conformability of a foam dressing - clinical experience based on 104 cases. EWMA 2018. 4. Braunwart H, Christiansen C. In vitro Testing of Bacterial Trapping in a Silicone Foam Wound Dressing. Wounds UK 2019.



**"The skin can within a short period
of time be significantly damaged
due to unwanted wound exudate.**

**This means that absorption of
exudate is the most essential for
me as a patient"**

Flemming, wound patient, Denmark

