

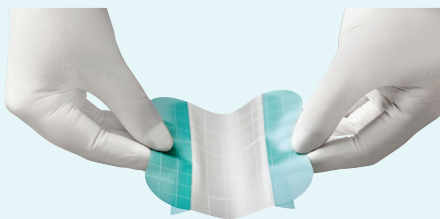
Comfeel® Plus

The protection you know
The user friendliness you need





User friendly design



- Easy to apply aseptically when wearing gloves due to 3-piece non-touch system.

Ensured protection



- Protection for wounds, skin at risk and newly formed skin.
- Smooth top film and bevelled edges to reduce friction and rolling edges.

Wound monitoring



- Mapping grid for monitoring and change indication, allows fewer dressing changes and less wound disturbance to support healing.



- Formulated without pectin, known allergens such as latex or colophony, or animal derivatives such as gelatin.

Comfeel Plus Indications

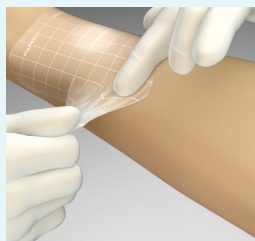
- Intended for **moist wound healing** and **exudate management** for a wide range of non-to-low exuding wounds such as **leg ulcers, pressure ulcers, superficial burns, post-operative wounds** and **skin abrasions**.
- Facilitates **autolytic debridement** of **dry slough** and **necrosis**.
- Can be used for the protection of skin at risk and newly formed skin.

Application & Removal

- Ensure skin is clean and dry.
- Warm the product prior to application to activate the adhesive.
- Using the 3-piece non-touch application, remove the centre release liner and apply over the wound.
- Smooth over the dressing and mould it to the skin whilst removing the side release liners one at a time.
- To remove, gently lift the dressing at the corner and stretch parallel to the skin.



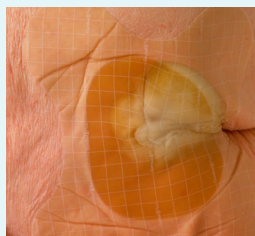
Application



Removal

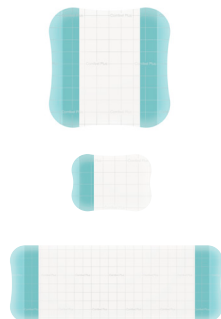
When is it time to change Comfeel Plus?

- Comfeel may be left in place for up to 7 days depending on the amount of exudate.
- When Comfeel's hydrocolloid adhesive absorbs exudate, a gel is formed creating a milky white appearance. Comfeel should be changed when this approaches the edge of the dressing.



Comfeel® Plus Transparent

Size (cm)	Quantity	Code	NHS	PIP
5x7	10	33530	ELM036	236-7332
5x15	10	33547	ELM096	301-0618
5x25	5	33548	ELM163	301-0600
10x10	10	33533	ELM060	282-7780
9x14	10	33536	ELM002	236-7340
9x25	5	33537	ELM189	296-2561
15x15	5	33539	ELM037	282-7798
15x20	5	33542	ELM004	236-7324
20x20	5	33545	ELM190	282-7806



Comfeel® Plus

Size (cm)	Quantity	Code	NHS	PIP
10x10	10	33110	ELM351	222-9904
15x15	10	33115	ELM353	222-9912
20x20	5	33120	ELM164	222-9920
4x6	30	33146	ELM064	285-2945
17x17 sacral	5	33285	ELM229	405-2668
6x8 contour	10	33280	ELM033	228-4818
9x11 contour	10	33283	ELM034	228-4826

