

# A guide to using Biatain<sup>®</sup> Silicone

## Preparing the skin for application of Biatain Silicone

1. Cleanse the wound in accordance with normal procedures e.g. lukewarm water or physiological saline.
2. Gently dry the skin around the wound.
3. If a topical product is applied, allow the skin to dry before dressing application.

## Application Guide

1. Select a dressing where the foam pad overlaps the wound edge by a minimum of 1-2cm



2. Using the 3-piece non-touch aseptic technique, remove the central release liner from the dressing.



3. Holding on to the remaining side release liners, centralise the dressing adhesive side down over the wound.

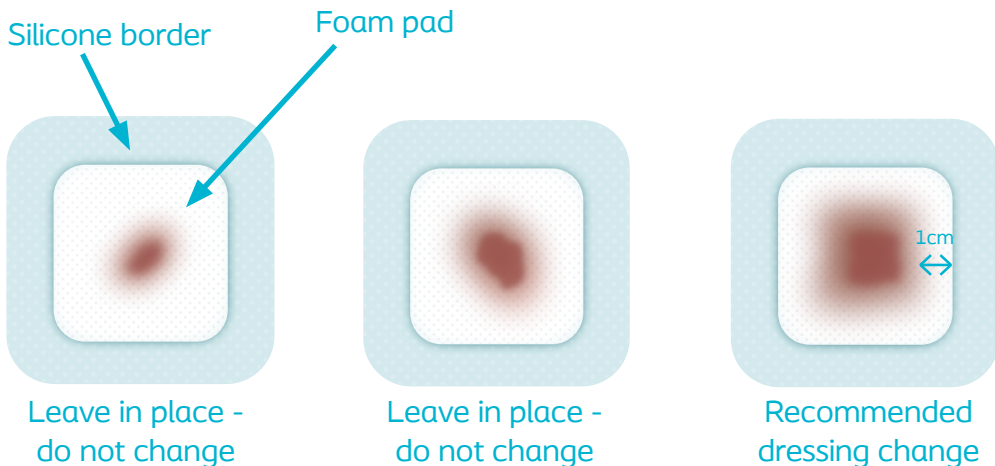


4. Remove the side release liners one at a time and ensure the dressing is secured to the skin.

**For difficult-to-dress areas such as elbows and knees, consider using a shaped dressing.**

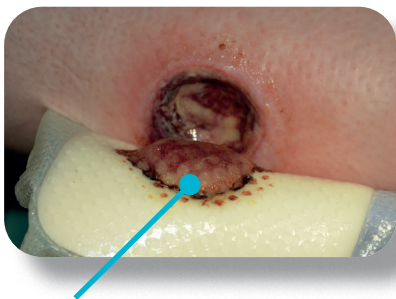
## When is it time to change a Biatain Silicone dressing?

Biatain Silicone can be left in place for up to 7 days dependent on exudate level. Biatain Silicone should be changed when there is a 1cm gap between the exudate and the edge of the dressing foam pad:



*This information is for general guidance only and should not replace clinical judgement*

## When removing the dressing you can expect to see how Biatain Silicone has...



**3DFit Technology in clinical practice**



**Absorbed vertically**



**Conformed to the wound bed**



**Retained exudate**

**Biatain Silicone is designed to reduce exudate pooling and thereby the risk of infection and maceration of the wound edge and periwound skin.**