

A guide to using *Biatain[®] Silicone*

Preparing for application of Biatain Silicone

1. Cleanse the wound following the instructions provided by your Healthcare Professional e.g. *lukewarm water*

2. Gently dry the skin around the wound, ensuring it is completely dry before applying your dressing

Application Guide

1. Select a dressing where the foam pad overlaps the wound edge by a minimum of 1-2cm



2. Using the 3-piece non-touch aseptic technique, remove the central release liner from the dressing.



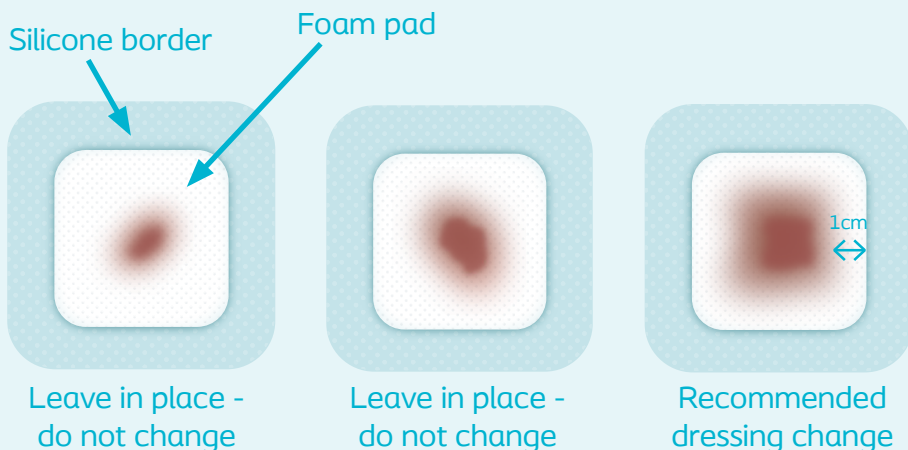
3. Holding on to the remaining side release liners, centralise the dressing adhesive side down over the wound.



4. Remove the side release liners one at a time and ensure the dressing is secured to the skin.

When is it time to change a Biatain® Silicone dressing?

Biatain Silicone can be left in place for up to 7 days dependent on exudate (wound fluid) level. Biatain Silicone should be changed when there is a 1cm gap between the exudate (wound fluid) and the edge of the dressing foam pad:



This information is for general guidance only. Please follow the instructions from your Healthcare Professional.

How to remove Biatain Silicone

To remove, gently lift the border on the dressing and slowly pull back the dressing until fully removed.



Scan the QR code to watch a video on how to apply and remove Biatain Silicone.



For further information, please refer to the Instructions for Use enclosed with your dressing. If you are unsure, please contact your Healthcare Professional.